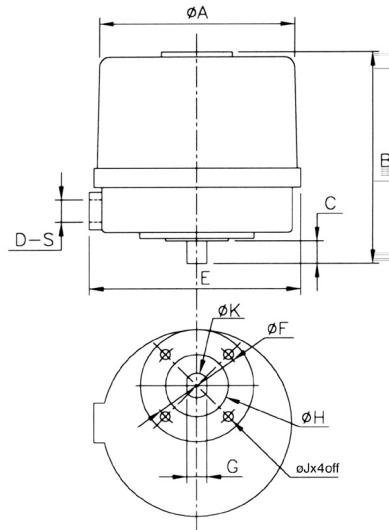


The ROM and RBM actuators provide quiet and reliable operation for all kinds of small ball valves and butterfly valves, as well as dampers and ventilation louvres. They provide self-locking as standard, local visual indicators and manual override options together with a wide range of voltages.

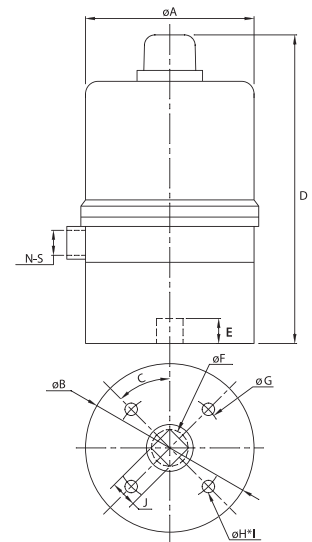
The RBM-2



Dimension table: Unit: mm

A	B	C	D	E	F	G	H	J	K	S	Flange type
154	168	18	1	160	70	16	50	m8	20	1/2 NPT / m20	F07

The ROM-A



*Drive Insert Option:
 J=14, F=19

Dimension table: Unit: mm

A	B	C	D	E	F	G	H	I	J _{Max}	N	S	Flange type
108	106	45°	198	16	24	70	m8	4	17	1	1/2 NPT / m20	F07

Mechanical Data:

Model	Power	90° Travel time		12/24V	Weight	Manual override	Output Drive	Torque	Mounting base designation to	
	Watts	50Hz	60Hz						ac/dc	kg
RBM-2	40	10	8	24	4.5	N/A	—	120 / 89	F07	or FA07
ROM-A	10	24	20	24	3.0	N/A	17 / 14	50 / 37	F07	or FA07

Electrical Performance Data:

12V/24V

Model No.	Torque (Nm)	Speed (sec / 90°)		Motor Power (W)	Motor Speed (rpm)		12Vdc / ac (A)			24Vdc / ac		
		50Hz	60Hz		12V	24V	Run	Start	Lock	Run	Start	Lock
ROM-A	50	24	20	3.3	6000	6000	0.5	3.0	3.0	0.27	1.8	1.8

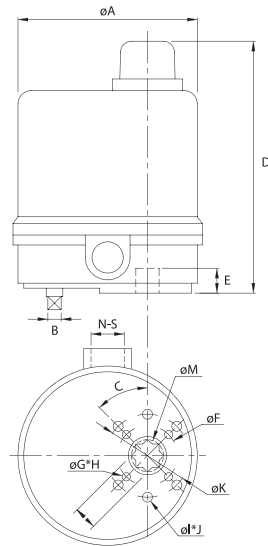
Single Phase

Model No.	Torque (Nm)	Speed (sec)		Motor Power (W)	Motor Speed (rpm)		110V Current			220V Current		
		50Hz	60Hz		50Hz	60Hz	Run	Start	Lock	Run	Start	Lock
RBM-2	120	10	8	40	1450	1720	1.0	3.0	1.8	0.5	1.5	0.9
ROM-A	50	24	20	10	3000	3600	0.5	1.5	0.6	0.3	1.0	0.5

Three Phase

Not applicable to RBM-2 or ROM-A

The ROM-1

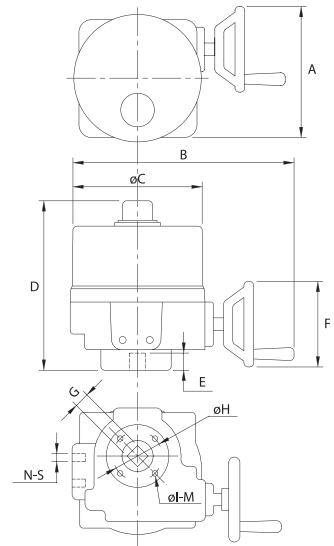


*Drive Insert Option:
 (1) L=11, M=15
 (2) L=9, M=12

Dimension table: Unit: mm

A	B	C	D	E	F	G	H	I	J	K	L _{Max}	M	N	S	Flange type
108	8	45°	152	15	36	m5	4	m6	6	50	14	19	1	1/2NPT/m20	F03 / F05

The ROM-2 to 3



Dimension table: Unit: mm

A	B	C	D	E	F	G _{Max}	H	I	M	N	S	Flange type
175	310	180	250	30	125	22	70	m8	4	2	1/2NPT/m20	F07

Mechanical Data:

Model	Power Watts	90° Travel time seconds		12/24V ac/dc	Weight kg	Manual override	Output Drive mm	Torque Nm / lbsft	Mounting base designation to	
		50Hz	60Hz						ISO5211	imperial
ROM-1	10	13	12	15	2.0	Lever	14 / 11 / 9	35 / 26	F05 / F03	—
ROM-2	40	17	15	15	9.0	Handwheel	22	90 / 67	F07 or	FA07
ROM-3	40	26	22	22	9.0	Handwheel	22	150 / 110	F07 or	FA07

Electrical Performance Data:

12V/24V

Model No.	Torque (Nm)	Speed (sec / 90°)		Motor Power (W)	Motor Speed (rpm)		12Vdc / ac (A)			24Vdc / ac		
		50Hz	60Hz		12V	24V	Run	Start	Lock	Run	Start	Lock
ROM-1	35	15	12	3.3	6000	6000	0.5	3.0	3.0	0.27	1.8	1.8
ROM-2	90	15	15	70	1800	1800	3.4	5.0	8.5	2.0	3.0	5.0
ROM-3	150	22	22	70	1800	1800	3.4	5.0	8.5	2.0	3.0	5.0

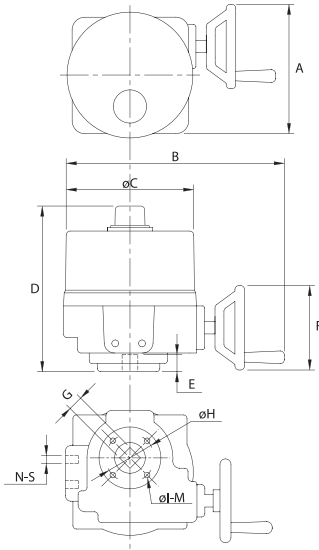
Single Phase

Model No.	Torque (Nm)	Speed (sec)		Motor Power (W)	Motor Speed (rpm)		110V Current			220V Current		
		50Hz	60Hz		50Hz	60Hz	Run	Start	Lock	Run	Start	Lock
ROM-1	35	13	12	10	3000	3600	0.5	1.5	0.6	0.3	1.0	0.5
ROM-2	90	17	15	40	1450	1720	1.0	3.0	1.8	0.5	1.5	0.9
ROM-3	150	26	22	40	1450	1720	1.0	3.0	1.8	0.5	1.5	0.9

Three Phase

Model No.	Torque (Nm)	Speed (sec)		Motor Power (W)	Motor Speed (rpm)		220V-240V Current			380V Current			440V Current		
		50Hz	60Hz		50Hz	60Hz	Run	Start	Lock	Run	Start	Lock	Run	Start	Lock
ROM-2	90	17	15	40	1450	1720	0.6	1.8	1.1	0.3	1.0	0.7	0.4	1.3	0.7
ROM-3	150	26	22	40	1450	1720	0.6	1.8	1.1	0.3	1.0	0.7	0.4	1.3	0.7

The ROM-4



Dimension table: Unit: mm

A	B	C	D	E	F	G _{Max}	H	I	M	N	S	Flange type
265	375	215	320	50	195	35	102	m10	4	2	1/2NPT / m20	F10

Mechanical Data:

Model	Power Watts	90° Travel time seconds		12/24V ac/dc	Weight kg	Manual override	Output Drive mm	Torque Nm / lbsft	Mounting base designation to	
		50Hz	60Hz						ISO5211	imperial
ROM-4	120	26	22	22	17.5	Handwheel	35	400 / 295	F10	or FA10

Electrical Performance Data:

12V/24V

Model No.	Torque (Nm)	Speed (sec / 90°)		Motor Power (W)	Motor Speed (rpm)		12Vdc / ac (A)			24Vdc / ac		
		50Hz	60Hz		12V	24V	Run	Start	Lock	Run	Start	Lock
ROM-4	400	22		180	1800	1800	5.0	8.5	10.0	3.0	5.0	6.0

Single Phase

Model No.	Torque (Nm)	Speed (sec)		Motor Power (W)	Motor Speed (rpm)		110V Current			220V Current		
		50Hz	60Hz		50Hz	60Hz	Run	Start	Lock	Run	Start	Lock
ROM-4	400	26	22	120	1450	1720	1.0	3.0	3.6	0.5	1.5	1.8

Three Phase

Model No.	Torque (Nm)	Speed (sec)		Motor Power (W)	Motor Speed (rpm)		220V-240V Current			380V Current			440V Current		
		50Hz	60Hz		50Hz	60Hz	Run	Start	Lock	Run	Start	Lock	Run	Start	Lock
ROM-4	400	26	22	120	1450	1720	1.0	3.0	3.5	0.7	2.2	2.0	0.8	2.5	2.0

Features:

Enclosure

- IP 67 (NEMA 4, NEMA 4X) waterproof and dust-proof enclosures.
- Material: Aluminium alloy.
- Finish: Dry powder coated.

Motor

- Standard extended duty cycle induction motor. H insulation class for ROM-1 and ROM-A; F class for RBM-2 and ROM-2 to ROM-4.
- Built-in thermal motor protection (135°C).

Position Indicator

- All models have continuous position indication on the actuator top cover.

Manual Override

- Non-clutch design, the manual operation can be operated without any lever, clutch or brake upon power outage.
- When the electric motor is operating, the manual override will not rotate.

Gear Train

- High alloy steel gear trains provide self-locking function to avoid valve back drive.
- Gear trains are factory lubricated with a high temperature rated lubricant.

Mechanical Stops

- Externally adjustable mechanical stops are provided on ROM-2, 3 & 4 actuators.

Working Conditions

- Ambient temperature: -5°C to +60°C.
- Humidity: 30% to 95%.

Various Options

- Anti-condensation heater.
- Additional limit switches.
- Potentiometer unit (1K Ohm).
- Local control unit (local/remote, on/off).
- Conduit entries 1/2" NPT or M20.
- Adjustable torque switches.
- Current position transmitter (output 4-20mA).
- Modulating controller.

Certificates

- ISO 9001, CE, CSA.

Couplings

- Standard coupling is for a square shaft. Other couplings like 2-flat are available on request.

Optional Extras:

Torque Switches

Cam activated torque switches to provide torque over-load protection (available on ROM-2, 3 & 4).

Potentiometer Unit

Synchronous with output transmission shaft to provide a feedback signal for Position Indicator etc.

Current Position Transmitter

Works in conjunction with the Potentiometer Unit and provides 4-20mA output signal for position indication etc.

Local Control Unit

Local / Remote selection switches, Open / Close selection switches (available on ROM-2, 3 & 4 only).

Anti-condensation Heater

This heater is available for all sizes.

Position Indicator

Position Indicator can be either 0-100% or 4-20mA.

Limit Switches

Two extra limit switches are available.

rotork®

UK head office

Rotork Controls Limited
telephone Bath 01225 733200
telefax 01225 333467
email mail@rotork.co.uk

USA head office

Rotork Controls Inc
telephone Rochester (585) 328 1550
telefax (585) 328 5848
email info@rotork.com



Rotork Controls Ltd, Bath, UK



Rotork Controls Inc, Rochester, USA

A full listing of our worldwide sales and service network is available on our website at **www.rotork.com**

As part of a process of on-going product development, Rotork reserves the right to amend and change specifications without prior notice.

Published data may be subject to change.

For the very latest version release, visit our website at www.rotork.com

The name Rotork is a registered trademark. Rotork recognizes all registered trademarks. Published and produced in the UK by Rotork Controls Limited.